

# 2600 TELEGRAPH ROAD

## BLOOMFIELD HILLS



### PREMISES

- Two-story, 90,000 SF office building

### AVAILABILITY

- 2nd Floor: 40,513 SF
- 1st Floor: Suites from 1,045 SF to 8,677 SF (contiguous)
- Lower Level: Storage and data room

### RENTAL RATE

- Floor 2: \$26.50 psf
- Floor 1: \$23.50
- Lower Level: \$14.95 psf
- 2023 Base Year, plus electricity

### FEATURES AND AMENITIES

- Building and Monument Signage Available
- Expansive two-story atrium lobby with three-level spiral staircase
- Premium detailing including marble floor, polished oak and solid brass
- Theater-style auditorium
- Magnificent wooded setting
- Ample well-lit parking including underground executive parking
- Computerized security/entry access
- Nearby fine dining, hotels and retail
- Convenient I-75 access via Square Lake Road interchange

#### FOR MORE INFORMATION

Dan Leppink  
248-644-7600  
dleppink@kojaian.com

MORE THAN  
BUILDINGS

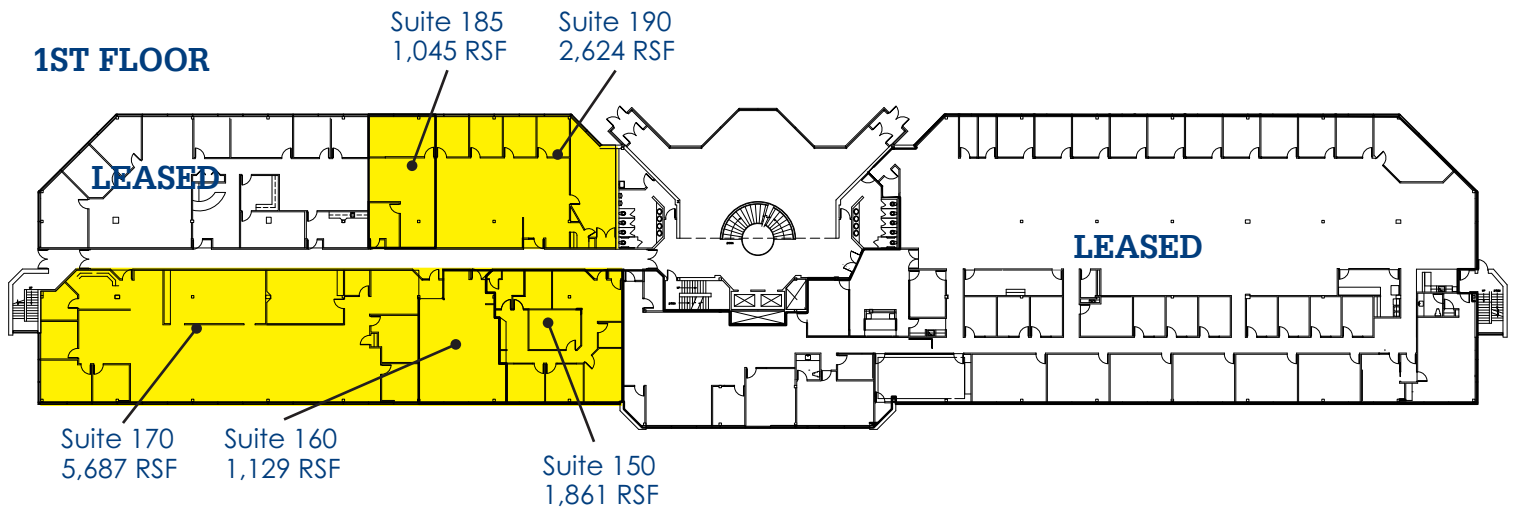
LOCATION | BUSINESS | IMAGE | SUCCESS

**KOJAIAN**   
KOJAIAN.COM

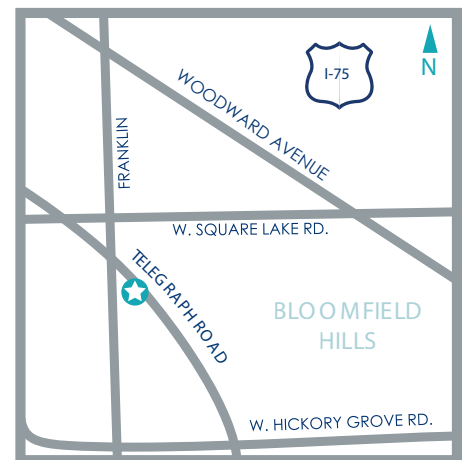
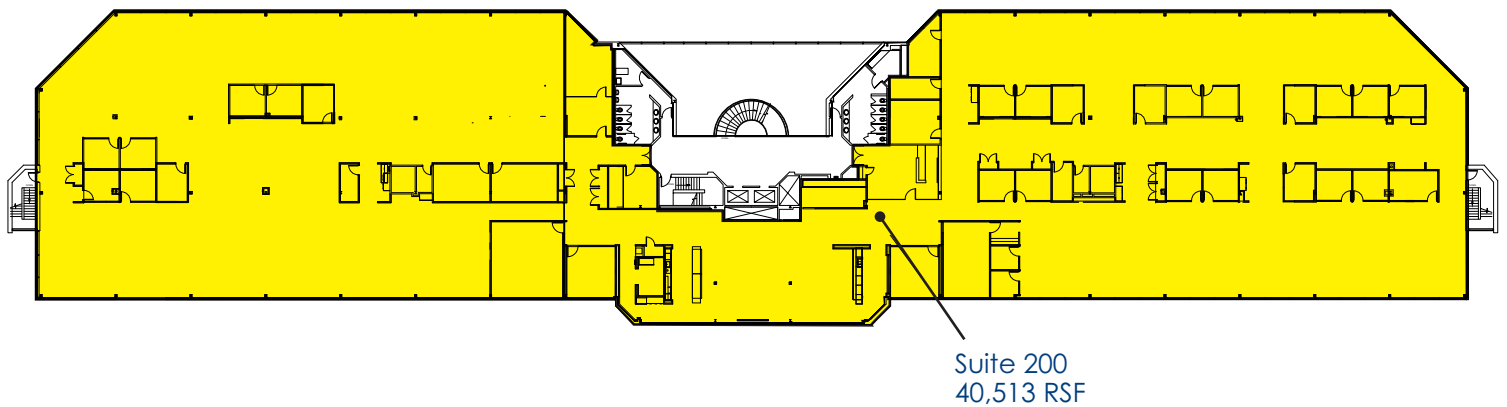
# 2600 TELEGRAPH ROAD

## BLOOMFIELD HILLS

### 1ST FLOOR



### 2ND FLOOR



#### FOR MORE INFORMATION

Dan Leppink  
248-644-7600  
dleppink@kojaian.com