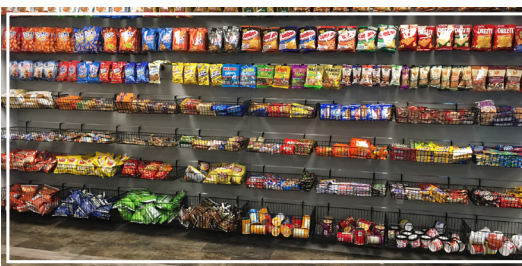


# STONERIDGE I

41000 WOODWARD AVENUE, BLOOMFIELD HILLS



## PREMISES

- Three-story, 150,000 SF office building with two connected wings

## AVAILABILITY

- 1st Floor: (Suites from 865 SF up to 22,018 SF)
- 2nd Floor (Suites from 4,729 SF up to 23,954 SF)
- 3rd Floor (Suites from 2,158 SF up to 26,545 SF)
- ENTIRE WEST BUILDING

## RENTAL RATE

- \$23.50psf
- 2023 Base Year, plus electricity

## FEATURES AND AMENITIES

- **PROMINENT BUILDING SIGNAGE AVAILABLE**
- **NEW AMENITY:** Fully-equipped fitness center with Peloton bikes
- **UPDATED AMENITY:** Market Twenty 4 Seven, a self-checkout micro-market now fulfills the grab n' go food service.
- Magnificent wooded setting in the heart of Bloomfield Hills
- Inviting three-story rotunda lobbies and recently renovated common areas and restrooms
- Convenient points of entry, including walk-out access on both first and second floors
- Well-lit parking with adjacent 2-level covered parking deck
- Computerized security/entry access
- Convenient I-75 access less than a mile away
- Nearby hotels and fine restaurants

## FOR MORE INFORMATION

Dan Leppink  
248-644-7600  
dleppink@kojaian.com

MORE THAN  
BUILDINGS

LOCATION | BUSINESS | IMAGE | SUCCESS

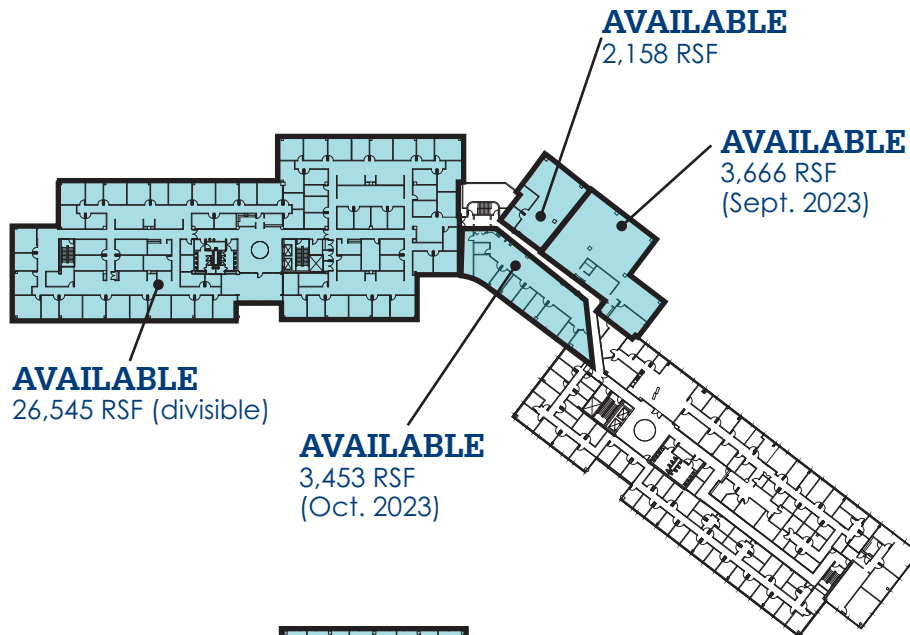
**KOJAIAN**   
KOJAIAN.COM

# STONERIDGE I

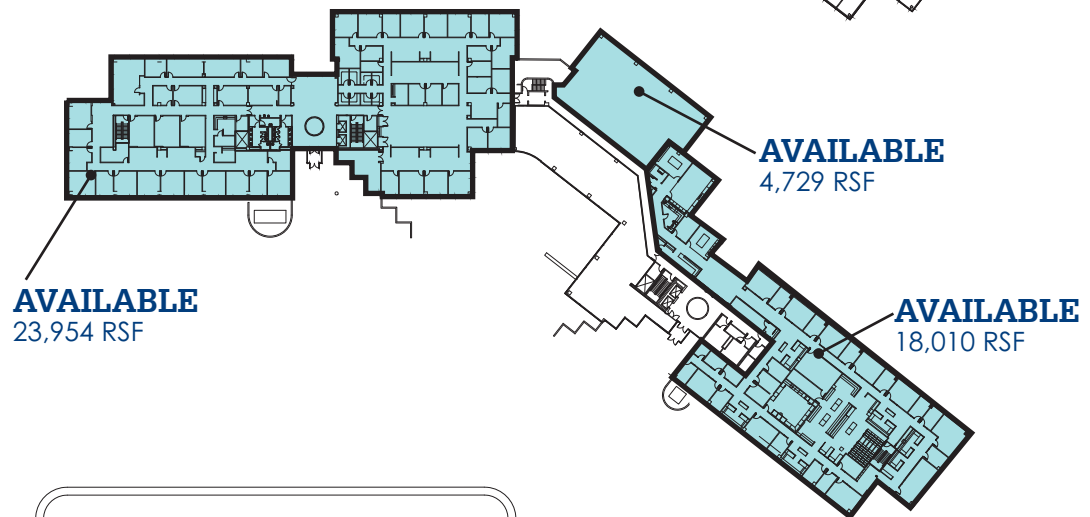
41000 WOODWARD AVENUE, BLOOMFIELD HILLS

 AVAILABLE

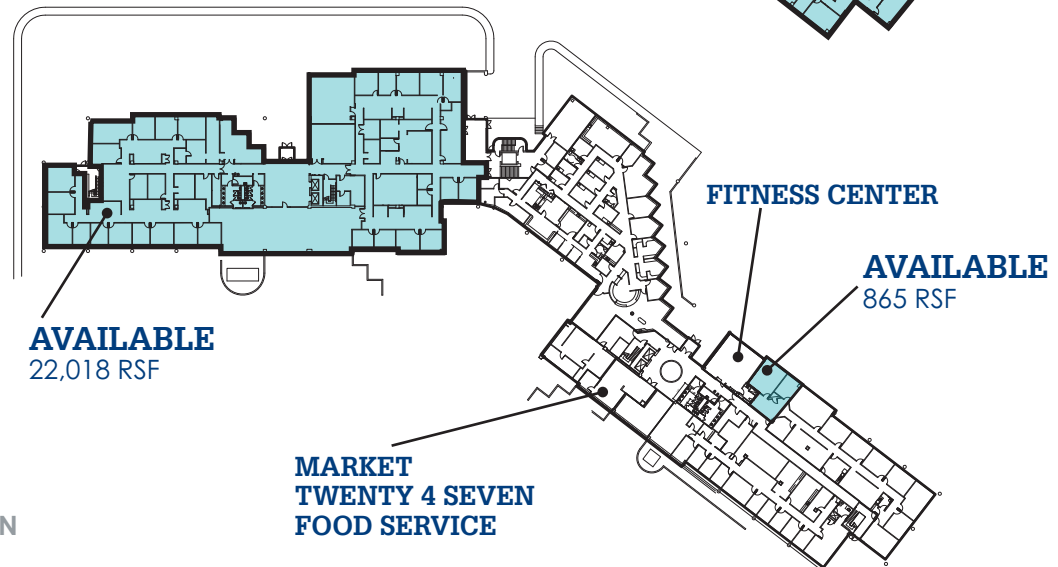
## THIRD FLOOR



## SECOND FLOOR



## GROUND FLOOR



FOR MORE INFORMATION  
Dan Leppink  
248-644-7600  
dleppink@kojaian.com